



# ADDERLink™ ipeps+ Remote Access KVM

High performance KVM over IP that delivers a complete, secure, non-blocking approach to Remote Server management



## Features

### Independent Operation

Gives full control even during boot up, BIOS level or computer crash states. The ADDERLink™ ipeps+ will work even if the controlled device is not operational.

### High Video Performance

The ipeps+ will accept an HDMI® input up to 1920x1200 resolution. It incorporates the renowned VNC™ Viewer from RealVNC®, which allows frame rates of up to 30fps, depending upon available network bandwidth and content. Alternatively, it may be used with any VNC viewer that supports RFB v3 or v4. The unit may be attached to computers with DVI or DisplayPort™ DP++ (dual-mode) with a converter cable.

### Highly Secure

Enterprise grade security (using AES 128 or 256-bit encryption and RSA 2048-bit public key authentication) is employed as standard. This is further enhanced by VNC, which allows the creation of ciphered user communications.

### User Management

The ipeps+ can create up to 16 user profiles with defined access rights. LDAP integration with Active Directory is provided for enterprise level user authentication. Up to 8 remote users may access the unit simultaneously.

### EDID Management

The ipeps+ has intelligent EDID management allowing the user to specify the video modes generated by the controlled device.

### Local Console

KVM connections are available for local user access. This may be useful during emergency and system maintenance activities.

### Multi-screen Computers

Access computers with up to 4 screens. Requires computer operating system that supports Absolute mouse mode. A separate ipeps+ and VNC Viewer is needed for each screen.

### Virtual Media

The ipeps+ may be used as a conduit to transfer files in both directions between remote users and the controlled computer.

### Remote Gateway To ADDERLink™ Matrix Products

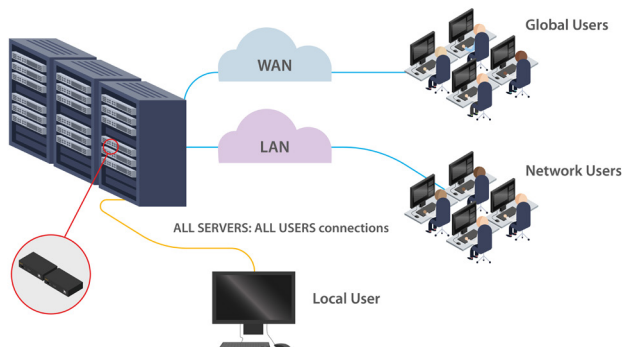
The ipeps+ may be used as a remote gateway into the ADDERLink™ INFINITY, DDX and XDIP matrix systems, plus the ADDERView™ 4 PRO Switch. This will allow remote users to access any computer connected to the switch.

## Product In Brief

A powerful and flexible KVM over IP product contained within a compact unit, the ADDERLink™ ipeps+ enables computer access from anywhere in the world, securely and remotely via the Internet or a corporate network.

The ipeps+ uses RealVNC™ client software that is specifically designed for secure, high performance KVM over IP applications.

- Access Multi-Screen Computers
- High performance video streaming up to 1920x1200 resolution at 30 frames per second
- Non-blocking access for up to 8 remote and one local users
- Compact metal case



## Technical Specifications

### Controlled Computer Connections

- HDMI® and USB Type B
- Supports USB1.1 and USB2.0 HID devices (keyboard, mouse, tablet and touch)
- Can be interfaced to DVI and DisplayPort™ with appropriate adaptors

### Video Resolutions

- The system supports resolutions to a maximum of 1920x1200 @60Hz

### Software Compatibility

- All known operating systems
- No drivers required

### Network Connections

- RJ45 (8p8c) Ethernet port

### Local Console Connections

- HDMI, 3x USB Type A
- Audio 3.5mm (reserved for future use)

### Front Panel

- LED status indicators for network (LNK), local user connection (LOC), remote user connection (REM) and power/upgrade (PWR)

### Physical Design

- Compact case, robust metal construction
- Dimensions: 169mm/6.65"(W) x 31mm/1.22"(H) x 120mm/4.8"(D)
- Weight: 0.6kg/1.3lbs

### Power Supply

- 100-240 VAC, 47/63Hz
- 12 VDC 18W output from power supply unit

### Operating Temperature

- 0°C to 40°C/32°F to 104°F

### Approvals

- CE, FCC



ADDERLink ipeps+ Front



ADDERLink ipeps+ Back

## Ordering Information

**IPEPS-PLUS-XX:** Single node with 12V PSU and country specific power cable

### What's in the Box

- 1x IPEPS-PLUS unit
- 1x power supply unit
- 1x country specific power cable
- 1x 2m/6.5ft HDMI® cable
- 1x 2m/6.5ft USB A to B cable
- 1x quick start guide

## Accessories (Sold Separately)

**VSCD11:** 2m/6.5ft HDMI® to DVI-D convertor cable

**VSCD12:** 1.5m/5ft Lockable HDMI® cable

**RMK8:** Rackmount kit

## About Adder

Adder is a leading developer and thought leader in connectivity solutions. Adder's advanced range of KVM switches, extenders and IP solutions enable the control of local, remote and global IT systems across the enterprise. The company distributes its products in more than 60 countries through a network of distributors, resellers and OEMs.

Adder has offices in China, Germany, Japan, the Netherlands, Singapore, Spain, France, Sweden, United Kingdom and United States.

To find out more, visit: [adder.com](http://adder.com)

#### Global Headquarters

Tel: +44 (0)1954 780044 | Fax: +44 (0)1954 780081  
Email: [sales@adder.com](mailto:sales@adder.com)

#### Americas

Tel: +1 888 932 3337 | Fax: +1 888 275 1117  
Email: [usasales@adder.com](mailto:usasales@adder.com)

#### Asia Pacific

Tel: +65 6288 5767 | Fax: +65 6284 1150  
Email: [asiasales@adder.com](mailto:asiasales@adder.com)

All brand names and trademarks are the property of their respective owner. Copyright 2020 | Adder Technology Ltd. | ADDER\_DS026\_EN\_v11\_FINAL\_AP

Information contained in this data sheet is up-to-date and correct as at the date of issue. As Adder Technology cannot control or anticipate the conditions under which this product may be used, each user should review the information in the specific context of planned use. Images are for illustrative purposes only.

**ADDER®**  
THE IP KVM PEOPLE

DATA SHEET