

# AirLink® XR90 5G High-Performance Multi-Network Vehicle Router

The supercharged AirLink XR90 is purpose-built for public safety and transit with available dual-5G cellular radios and dual independent 4x4 MU MIMO Wi-Fi 6 antennas. It is the highest performing, most flexible router in the Sierra portfolio. It supports complete device-to-cloud security, reduces your total cost of ownership with ALMS Out-of-Band management, and with the cartridge-based design, enables long-term expandability and upgradability.



**AirLink® XR90 Single/Dual 5G**

- Expandable 5G
- Single 5G: 5 Gigabit Ethernet
- Dual 5G: 6 Gigabit Ethernet
- GNSS with Dead Reckoning
  
- Dual 4x4 MU MIMO Wi-Fi 6
- Single/Dual Serial
- IP64 Rated
- AirLinkOS with AirLink Premium



## AirLink® XR90 – Router Specifications

### KEY FEATURES

<b>Cellular Radios</b>	Single & Dual 5G LPWA for ALMS Out of Band Management
<b>Wi-Fi</b>	Dual 4x4 MU MIMO Wi-Fi 6
<b>Ethernet</b>	Single 5G: 4x Gigabit, 1x 5 Gigabit Ethernet Port Dual 5G: 5x Gigabit, 1x 5 Gigabit Ethernet Port

<b>KEY FEATURES</b>	
<b>Serial</b>	Single/Dual RS-232 (DB9) with optional cables
<b>GNSS</b>	48 Channel GNSS with Dead Reckoning
<b>CAN</b>	CAN bus/OBD-II (J1979)/J1939)
<b>I/O</b>	5 GPIO
<b>USB</b>	USB 3.1 USB-C
<b>Bluetooth</b>	Selectable Bluetooth 4.x Classic or Bluetooth LE (Future)
<b>IP Rating</b>	Sealed Aluminum Housing (IP64 Rated)
<b>Services</b>	AirLink Premium
<b>Operating System</b>	AirLink OS
<b>Management System</b>	ALMS

<b>Region</b>	<b>North America</b>	<b>EMEA &amp; APAC</b>
<b>CELLULAR</b>		
<b>Variant</b>	North America	EMEA, APAC
<b>Technology</b>	Single/Dual 5G	Single/Dual 5G
<b>Peak Downlink (Theoretical)</b>	4.14 Gbps	4.14 Gbps
<b>Peak Uplink (Theoretical)</b>	660 Mbps	660 Mbps
<b>LTE Category</b>	5G	5G
<b>Region</b>	NAM	EMEA, APAC
<b>Radio</b>	EM9190	EM9190
<b>MIMO</b>	Single/Dual 4x4	Single/Dual 4x4
<b>RF Connectors</b>	FAKRA	FAKRA
<b>SIM</b>	Dual SIM (Mini-2FF)	Dual SIM (Mini-2FF)
<b>FREQUENCY BANDS</b>		
<b>5G Bands</b>	n1, n2, n3, n5, n28, n41, n66, n71, n77, n78, n79 (NSA & SA Support) Future Variant adds support for: n7, n8, n12, n20, n25, n38, n40, n48 (NSA & SA Support)	n1, n2, n3, n5, n28, n41, n66, n71, n77, n78, n79 (NSA & SA Support) Future Variant adds support for: n7, n8, n12, n20, n25, n38, n40, n48 (NSA & SA Support)

<b>4G LTE Bands FREQUENCY BANDS</b>	B1, B2, B3, B4, B5, B7, B8, B12, B13, B14, B17, B18, B19, B20, B25, B26, B28, B29, B30, B32, B34, B38, B39, B40, B41, B42, B46, B48, B66, B71	B1, B2, B3, B4, B5, B7, B8, B12, B13, B14, B17, B18, B19, B20, B25, B26, B28, B29, B30, B32, B34, B38, B39, B40, B41, B42, B46, B48, B66, B71
<b>3G HSPA+ Bands</b>	B1, B2, B3, B4, B5, B6, B8, B9, B19	B1, B2, B3, B4, B5, B6, B8, B9, B19
<b>2G GPRS Bands</b>	–	–
<b>LPWA</b>	B1, B2, B3, B4, B5, B8, B9, B10, B12, B13, B17, B18, B19, B20, B25, B26, B27, B28, B66	B1, B2, B3, B4, B5, B8, B9, B10, B12, B13, B17, B18, B19, B20, B25, B26, B27, B28, B66

## WIRELESS CERTIFICATION

<b>Regulatory</b>	FCC, IC/ISED, PTCRB	GCF, CE, RED, RCM, ESN
<b>Carrier</b>	AT&T, FirstNet® 4G, T-Mobile, Verizon, Rogers, Telus, Bell, CBRS	BT
<b>Public Safety</b>	FirstNet® 4G	ESN
<b>Part Numbers</b>	1104785 Single 5G 1104786 Dual 5G 1104757 XP 5G Cartridge (Optional)	1104722 Single 5G 1104723 Dual 5G 1104757 XP 5G Cartridge (Optional)

## WI-FI (OPTIONAL)

<b>Wi-Fi Standard</b>	Wi-Fi 6 802.11ax
<b>Access Point</b>	Dual
<b>Client (Depot/WAN)</b>	Yes
<b>Client &amp; AP</b>	Yes
<b>Peak Throughput (Theoretical)</b>	2400 Mbps
<b>MIMO</b>	Dual 4x4
<b>Security</b>	WPA2/3 Enterprise
<b>Clients</b>	128 per radio
<b>SSID</b>	4 per radio
<b>Output Power</b>	23.3 dBm per chain
<b>Frequency</b>	2.4/5 GHz
<b>RF Connectors</b>	FAKRA (Beige)

## ENVIRONMENTAL

<b>Operating Temperature</b>	-30°C to +70°C / -22°F to +158°F
<b>Storage Temperature</b>	-40°C to +85°C / -40°F to +185°F
<b>Humidity</b>	95% RH @ 60°C
<b>Military Specification</b>	MIL-STD-810G (Shock, Vibration, Thermal Shock, Humidity)

**ENVIRONMENTAL**


---

**IP Rating** IP64

**INDUSTRY CERTIFICATIONS**


---

**Safety** IECCE Certification Bodies Scheme (CB Scheme), UL 60950

---

**Vehicle Usage** E-Mark (72/245/EEC, 2009/19/EC), ISO7637- 2, SAE J1455 (Shock & Vibration, Electrical)

---

**Environmental Directives** RoHS2, REACH, WEEE, Prop 65

---

**Hazardous Environments** Class 1 Div 2 – Ambient temperatures of -30°C to +60°C  
IECEX & ATEX

---

**Rail Usage** EN50155/EN45545 (Rolling Stock)

**POWER**


---

**Input Voltage** 7 to 36 VDC

---

**Power Consumption** Dual 5G Peak: 68W (5.7A @12V)  
Standby 55mW: (4.5mA@12V)

---

**Power Modes** Built-in protection against voltage transients including 5 VDC engine cranking and +200 VDC load dump  
Ignition Sense with time delay shutdown

**SECURITY**


---

**AAA** 802.1x /Radius authentication with Wi-Fi and Ethernet

---

**Firewall** Stateful firewall with port forwarding, DMZ

---

**WLAN Encryption** WPA2/WPA3 Personal/Enterprise FIPS 140-2

---

**Firmware Update** Secure Firmware Update

**NETWORK AND ROUTING**


---

Sierra Cognitive Wireless  
IPv4 and IPv6 Routing  
Network Address Translation (NAT)  
Port Forwarding  
DHCP Server  
IP Passthrough  
LAN Segmentation  
IPv4 Passthrough and IPv6 Prefix Extension  
WAN/LAN Connection Policy Management  
Policy-Based Routing  
Configurable MTU size  
Static Routing  
WAN Ethernet

---

## NETWORK AND ROUTING

---

**QoS** Application/Traffic Priority Queuing

---

**WAN Monitors** Connection Failure Recovery

---

## LAN (ETHERNET/USB)

---

USB to Ethernet

---

## VPN

---

Integrated with ACM VPN Server  
IPsec protocol with IKEv1/IKEv2  
FIPS 140-2 Level 1 compliant

---

**Encryption** AES128/AES192/AES256

---

**Hashing** SHA256/SHA384/SHA512

---

**Key Exchange** DHGroup14/15/16/17/18/19/20/21

---

LAN to LAN and Host to LAN  
Up to 10 concurrent tunnels per link  
MOBIKE protocol  
IP compression  
Full/Split Tunnel  
Dead Peer Detection (DPD)

---

## ROUTER MANAGEMENT INTERFACES

---

ALMS  
Local web user interface  
REST API (Beta)

---

## EDGE COMPUTING

---

Support for Edge Compute Containerized Applications (Beta)

---

**RAM**<sup>1,2</sup> 200 MB

---

**Storage (Flash)**<sup>1</sup> 750 MB

---

**CPU** Quad Core ARMv8 64 bit

---

<sup>1</sup> Approximation available to containers (not device total)

<sup>2</sup> Depends on other enabled features

---

## AIRLINK SERVICES

---

**Services** AirLink Premium

---

**Support** 24/7

---

**Warranty** 1 year standard warranty with up to 5 years extended warranty with current

---

<b>AIRLINK SERVICES</b>	AirLink Premium subscription
<b>Device Management</b>	ALMS with Advanced Mobility Reporting
<b>Software Updates</b>	Unrestricted critical firmware updates
<b>RELIABILITY</b>	
<b>MTBF</b>	Single 5G: 19.0 years Using Telcordia SR-332 Issue 3 Method 1
<b>ACCESSORIES</b>	
<b>In The Box</b>	XR90, DC Power cable, LPWA Antenna, Quick Start Guide, AirLink Premium Leaflet

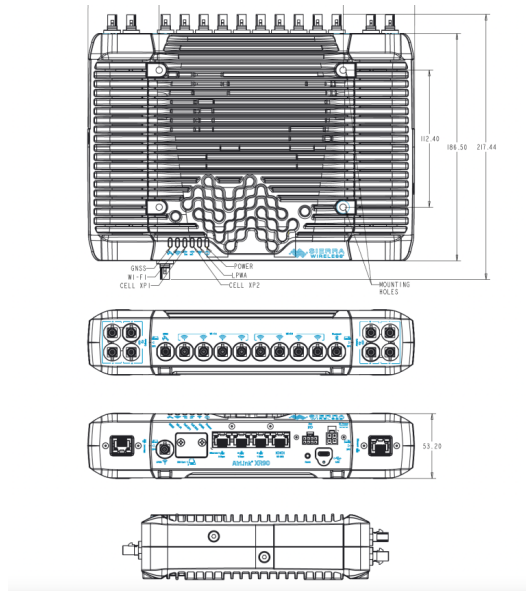
<b>Other Accessories (sold separately)</b>	6001004 XR80/90/MP/LX I/O Cable 6001192 XR80/90/MP70 J1939 Y Cable 6001204 XR80/90/MP70 OBD-II Y Cable 6001350 XR80/90 Mounting Bracket 6001372 XR80/90 AC Adaptor, 24 VDC 6001406 XR80/90 DC Power Cable 6001409 XR80/90 RJ45 to Dual DB9 6001410 XR80/90 RJ45 to Single DB9 6001433 XR80/90 DIN Rail Mounting Bracket 6001440 XR80/90 FAKRA Replacement Kit (8 Pieces) 6001456 XR80/90 to MG90 Mounting Bracket 1104757 XR80/90 XP-5G XR-Cartridge Global & NAM For Antenna options visit: <a href="#">here</a>
--	---

## DIMENSIONS

<b>Size</b>	Base: 220mm x 170mm x 53mm Single XP: 220mm x 220mm x 53mm Dual XP: 268mm x 220mm x 53mm
-------------	--

<b>Weight</b>	Base: 2.06 Kg Single XP: 2.64 Kg Dual XP: 3.22 Kg
---------------	---





*\*For carrier specific band support please refer to the hardware user guide.*